



CONSISTENCY IN CODING DATA

PROCEDURES

IMPACT ON RESEARCH

- Benchmarking
- MTQIP
- TQIP/NTDB

MTQIP Head CT Drill Down
7/1/18 - 2/1/19



M·TQIP

Trauma #	Age	ED Arrival Date	ED Arrival Time	Activation Status	ED GCS Total	Max Head AIS	Coumadin	ASA	Plavix	Head CT Code	Head CT Date	Head CT Time	Missing Data Alert	Time to Head CT (Hr)
										BW28ZZZ BW28ZZZ				

Table 18: Operative Irrigation and Debridement in Patients with Open Tibia Shaft Fracture

Group	Open Tibia Shaft Fracture	Irrigation and Debridement		Time to First Irrigation and Debridement (hours)	Irrigation and Debridement within 24 Hours		Missing Time to Irrigation and Debridement	
	N	N	%	Median (IQR)	N	%	N	%
All Others								
Collaborative								

Table 26: Cerebral Monitoring Method for Severe TBI Patients

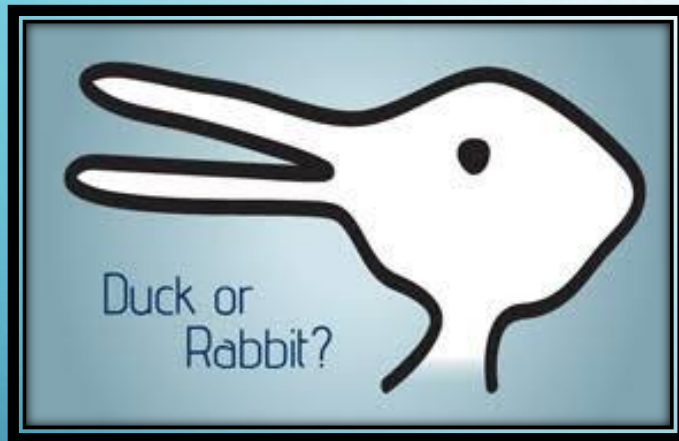
Group	Cerebral Monitoring	External Ventricular Drain		Other Pressure Monitoring Device		Intraparenchymal Oxygen Monitor		Jugular Venous Bulb	
	N	N	%	N	%	N	%	N	%
All Others									
Collaborative									

Note: Multiple methods are possible for an individual patient

RESIDENT PHYSICIAN PROJECT/RESEARCH

- SPLEEN EMBOLIZATION
- LIVER EMBOLIZATION
- CRANIOTOMY WITH MONITORING
- BURR HOLES
- ISOLATED HIP FX WITH FIXATION

INTERPRETATION



What's Your
Interpretation

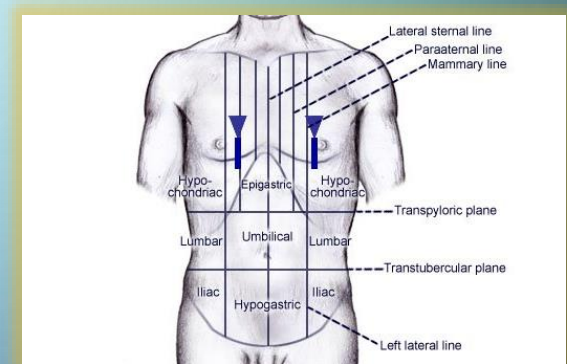


CODER INTERPRETATION

- **Fast Exam** “FOCUSED ASSESMENT WITH SONOGRAPHY IN TRAUMA” (Abd. vs. Thoracic vs. pelvic)
- **BW40ZZZ** – ULTRASONOGRAPHY ABDOMEN/NO CONTRAST/NO QUALIFIERS
- **BW41ZZZ** – IMAGING/ANATOMICAL REGION/ULTRASONOGRAPHY ABD. & PELVIS/NO CONTRAST/NO QUALIFIERS
- **BB4BZZZ** – (THORAX) IMAGING/RESPIRATORY SYSTEM/ULTRASONOGRAPHY PLEURA/NO CONTRAST/NO QUALIFIERS
- **BH4BZZZ** – (CHEST) IMAGING/SKIN, SUBCUTANEOUS TISSUE AND BREAST/ULTRASONOGRAPHY/CHEST WALL/NO CONTRAST/NO QUALIFIERS
- **B24CZZZ** – (PERICARDIUM) IMAGING/HEART/ULTRASONOGRAPHY/PERICARDIUM/NO CONTRAST/ NO QUALIFIERS
- **DON'T CAPTURE FAST EXAM**

FAST EXAM DEFINITION: a limited “RAPID” bedside ultrasound examination that seeks to detect free intraabdominal fluid or cardiac complications. The extended **FAST**, or E-**FAST**, expands the examination to assess for pneumothorax.

©Medscape.com



CT CHEST/ABD./PELVIS VS. CT CHEST, CT ABD., CT PELVIS (CT CHEST/NO CONTRAST)

- **BW24ZZZ** – IMAGING/ANATOMICAL REGIONS/CT/ABD. PELVIS/NO CONTRAST/NO QUALIFIERS
- **BW24YZZ** – IMAGING/ANATOMICAL REGIONS/CT/ABD. PELVIS/OTHER CONTRAST/NO QUALIFIERS
- **BP2WYZZ** – IMAGING/NON-AXIAL UPPER BONES/CT/THORAX/OTHER CONTRAST/NO QUALIFIERS
- **BP2W1ZZ** – IMAGING/NON-AXIAL UPPER BONES/CT/THORAX/LOW OSMOLAR CONTRAST/NO QUALIFIERS
- **BR27ZZZ** – IMAGING/AXIAL SKELETON, EXCEPT SKULL AND FACIAL BONES/CT/
THORACIC SPINE/NO CONTRAST/ NO QUALIFIER

CT HEAD VS. CT BRAIN

- BW28ZZZ/-1ZZ/-YZZ – IMAGING/ANATOMICAL REGIONS/CT/HEAD/W/WO/OTHER CONTRAST/NO QUALIFIERS
- BW2810Z – IMAGING/ANATOMICAL REGIONS/CT/HEAD/WITH CONTRAST/UNENHANCED AND ENHANCED QUALIFIER/NO QUALIFIER



CPR (CARDIOPULMONARY RESUSCITATION)

- 5A12012 – EXTRACORPOREAL OR SYSTEMIC ASSISTANCE AND PERFORMANCE/PHYSIOLOGICAL SYSTEMS/PERFORMANCE/CARDIAC/SINGLE/OUTPUT/MANUAL
- 5A02115 – EXTRACORPOREAL OR SYSTEMIC ASSISTANCE AND PERFORMANCE/PHYSIOLOGICAL SYSTEMS/ASSISTANCE/CARDIAC/INTERMITTENT/OUTPUT/PULSATILE COMPRESSION
- 5A1221Z – EXTRACORPOREAL OR SYSTEMIC ASSISTANCE AND PERFORMANCE/PHYSIOLOGICAL SYSTEMS/PERFORMANCE/CARDIAC/CONTINUOUS/OUTPUT/NO QUALIFIER
- 5A2204Z – EXTRACORPOREAL OR SYSTEMIC ASSISTANCE AND PERFORMANCE/PHYSIOLOGICAL/RESTORATION/CARDIAC/SINGLE/RHYTHM/NO QUALIFIER

BURR HOLES

WHAT ARE BURR HOLES? (AKA..TREPPANNING, TREPHINATION)

BURR HOLES ARE SMALL HOLES THAT A NEUROSURGEON MAKES IN THE SKULL. BURR HOLES ARE USED TO HELP RELIEVE PRESSURE ON THE BRAIN WHEN FLUID, SUCH AS BLOOD, BUILDS UP AND STARTS TO COMPRESS BRAIN TISSUE.

*WWW.HOPKINSMEDICINE.ORG

009440Z – MEDICAL AND SURGICAL/CENTRAL NERVOUS SYSTEM AND CRANIAL NERVES/DRAINAGE/SUBDURAL SPACE, INTRACRANIAL/PERCUTANEOUS ENDOSCOPIC/DRAINAGE DEVICE/NO QUALIFIER

00943ZZ – MEDICAL AND SURGICAL/CENTRAL NERVOUS SYSTEM AND CRANIAL NERVES/DRAINAGE/SUBDURAL SPACE, INTRACRANIAL/PERCUTANEOUS /NO DEVICE/NO QUALIFIER

0N903ZZ – MEDICAL AND SURGICAL/HEAD AND FACIAL BONES/DRAINAGE/SKULL/PERCUTANEOUS/DRAINAGE DEVICE/NO QUALIFIER

0N900ZZ – MEDICAL AND SURGICAL/HEAD AND FACIAL BONES/DRAINAGE/SKULL/OPEN/NO DEVICE/NO QUALIFIER

0NJ03ZZ – MEDICAL AND SURGICAL/HEAD AND FACIAL BONES/INSPECTION/SKULL/PERCUTANEOUS/NO DEVICE/NO QUALIFIER

BURR HOLES.....CONT..

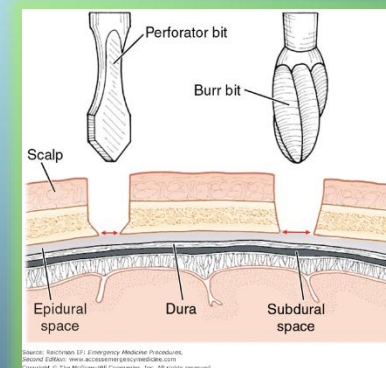
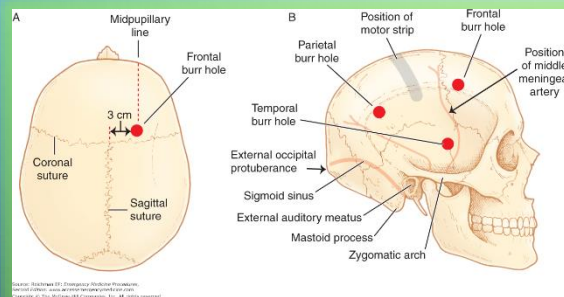
WHAT ARE BURR HOLES?

BURR HOLES ARE SMALL HOLES THAT A NEUROSURGEON MAKES IN THE SKULL. BURR HOLES ARE USED TO HELP RELIEVE PRESSURE ON THE BRAIN WHEN FLUID, SUCH AS BLOOD, BUILDS UP AND STARTS TO COMPRESS BRAIN TISSUE.

*WWW.HOPKINSMEDICINE.ORG

00C40ZZ – MEDICAL AND SURGICAL/CENTRAL NERVOUS SYSTEM AND CRANIAL NERVES/EXTIRPATION/SUBDURAL SPACE, INTRACRANIAL/OPEN/NO DEVICE/NO QUALIFIER

00C43ZZ – MEDICAL AND SURGICAL/CENTRAL NERVOUS SYSTEM AND CRANIAL NERVES/EXTIRPATION/SUBDURAL SPACE, INTRACRANIAL/PERCUTANEOUS/NO DEVICE/NO QUALIFIER



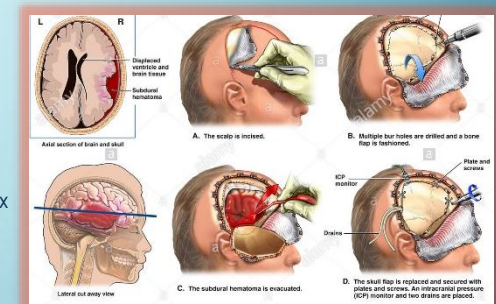
CRANIOTOMY

A **CRANIOTOMY** IS THE SURGICAL REMOVAL OF PART OF THE BONE FROM THE SKULL TO EXPOSE THE BRAIN. SPECIALIZED TOOLS ARE USED TO REMOVE THE SECTION OF BONE CALLED THE BONE FLAP. THE BONE FLAP IS TEMPORARILY REMOVED, THEN REPLACED AFTER THE BRAIN SURGERY HAS BEEN DONE. *WWW.HOPKINSMEDICAL.ORG

DRAINAGE VS. EXTIRPATION CHRONIC VS. ACUTE

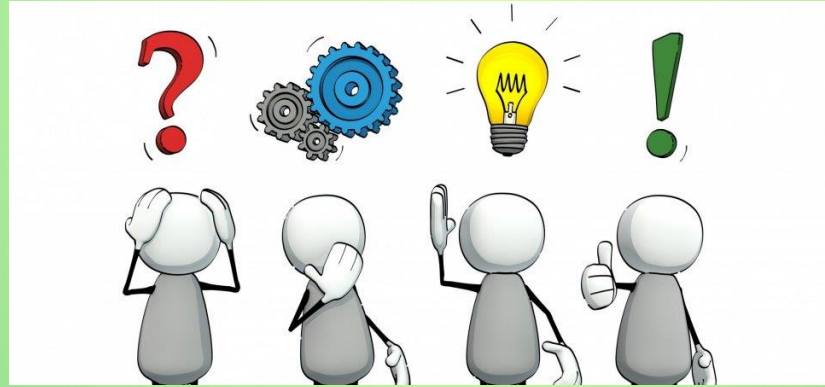
- DRAINAGE – LIQUID – CHRONIC SDH (009-)
- EXTIRPATION – SOLID – ACUTE SDH (00C-)
- 00J00ZZ – MEDICAL AND SURGICAL/CENTRAL NERVOUS SYSTEM AND CRANIAL NERVES/BRAIN/OPEN/NO DEVICE/NO QUALIFIER
- 00C40ZZ – MEDICAL AND SURGICAL/CENTRAL NERVOUS SYSTEM AND CRANIAL NERVES/EXTIRPATION/SUBDURAL SPACE, INTRACRANIAL/OPEN/NO DEVICE/NO QUALIFIER
- 00C30ZZ – MEDICAL AND SURGICAL/CENTRAL NERVOUS SYSTEM AND CRANIAL NERVES/EXTIRPATION/EPIDURAL SPACE, INTRACRANIAL/OPEN/NO DEVICE/NO QUALIFIER

*PER TRAUMA CODER WEBINAR-NSX



CRANIOTOMY

- 0WJ10ZZ – MEDICAL AND SURGICAL/ANATOMICAL REGIONS, GENERAL/INSPECTION/CRANIAL CAVITY/OPEN/NO DEVICE/NO QUALIFIER
- 0N910ZZ – MEDICAL AND SURGICAL/HEAD AND FACIAL BONES/DRAINAGE/FRONTAL BONE/OPEN/NO DEVICE/NO QUALIFIER
- 0N800ZZ – MEDICAL AND SURGICAL/HEAD AND FACIAL BONES/EXCISION/SKULL/OPEN/NO DEVICE/NO QUALIFIER
- 0N800ZZ – (EXPLORATORY) MEDICAL AND SURGICAL/HEAD AND FACIAL BONES/DIVISION/SKULL/OPEN/NO DEVICE/NO QUALIFIER
- 009440Z – MEDICAL AND SURGICAL/CENTRAL NERVOUS SYSTEM AND CRANIAL NERVES/DRAINAGE/SUBDURAL SPACE, INTRACRANIAL/PERCUTANEOUS ENDO/NO DEVICE/NO QUALIFIER
- 00940ZZ – MEDICAL AND SURGICAL/CENTRAL NERVOUS SYSTEM AND CRANIAL NERVES/DRAINAGE/SUBDURAL SPACE, INTRACRANIAL/OPEN/NO DEVICE/NO QUALIFIER



THANK YOU!

APRIL PIZZO

MCLAREN MACOMB REGISTRAR