

Uncommon Terms in the Trauma Registry Lexicon

Prepared and Presented by:

Jane F. Riebe-Rodgers, MPH, CSTR

With input from many of Michigan's Trauma Registry Staff

Contributors



- Angela Brawford
- Rhonda Harlow, Lakeland Health (St. Joseph)
- Nancy Hofman, St. Joe's (Ann Arbor)
- Colleen Kempf, Huron Valley Sinai (Commerce Twp)
- Laura Johnson, Henry Ford Allegiance (Jackson)
- Debra Kersey, Ascension Crittendon (Rochester)
- Jessica Landry, St. Mary's (Livonia)
- Heather Payton, Beumont (Trenton)
- April Pizzo, McLaren Macomb (Mt. Clemens)
- Jane Riebe-Rodgers, Mott Children's (Ann Arbor)
- Cece Roiter, Michigan Medicine (Ann Arbor)

Reasons for not submitting:

- I'm too new in the role to know what would be considered an "uncommon" term. They're ALL pretty uncommon to me.
- I'm afraid you'll think I'm stupid.
- I'm too busy to take the time to send an e-mail.
- I never come across any "uncommon" terms.
- I'm just so smart; I know it all.
- Other





C.S. MOTT CHILDREN'S HOSPITAL
MICHIGAN MEDICINE



Eponyms



Trendelenburg Position



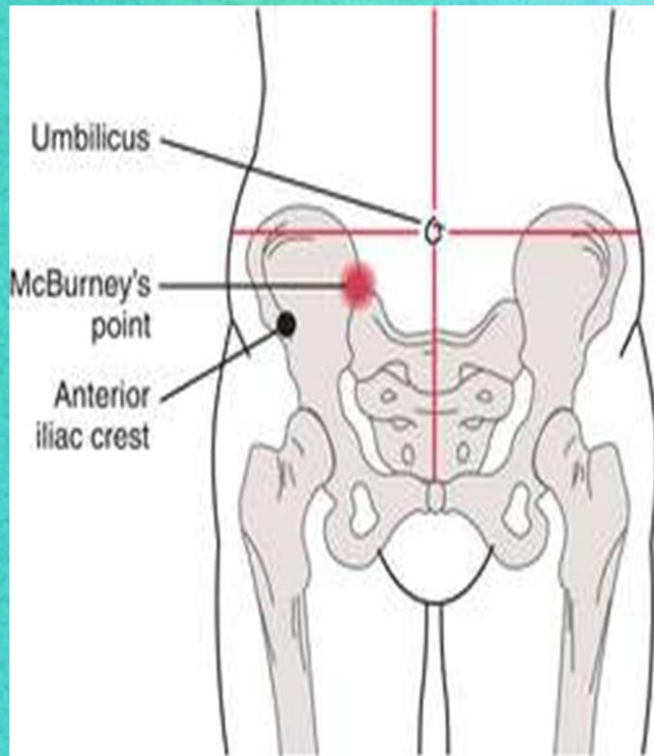
- A supine position in which the feet are higher than the head
- Used in patients who become actively hypotensive

Murphy's Sign



A sign of gallbladder disease consisting of pain on taking a deep breath when the examiner's fingers are on the approximate location of the gallbladder.

McBurney's Point



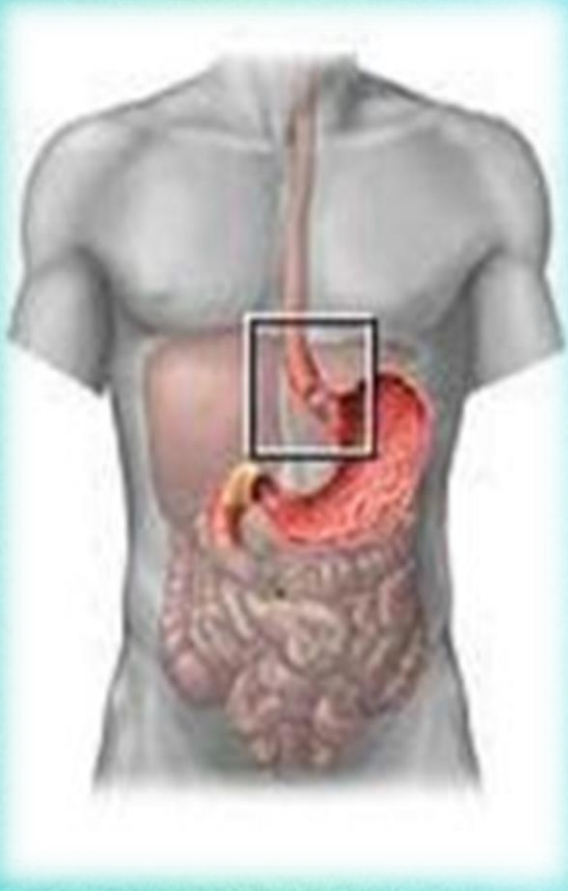
- The point of the right side of the abdomen that is $\frac{1}{3}$ of the distance from the anterior superior iliac spine to the umbilicus.
- The point roughly corresponds to the most common location of the base of the appendix where it is attached to the cecum.
- McBurney's Sign is deep tenderness at McBurney's Point, and is a sign of acute appendicitis.

Cheyne-Stokes Breathing



- Breathing characterized by rhythmic waxing and waning in the depth of respiration
- The patient breathes deeply for a short time and then breathes very slightly or stops breathing completely
- Pattern occurs over and over; every 45 seconds to 3 minutes
- Caused by disease affecting the respiratory centers; usually heart failure or brain damage

Mallory-Weiss Tear (Syndrome)

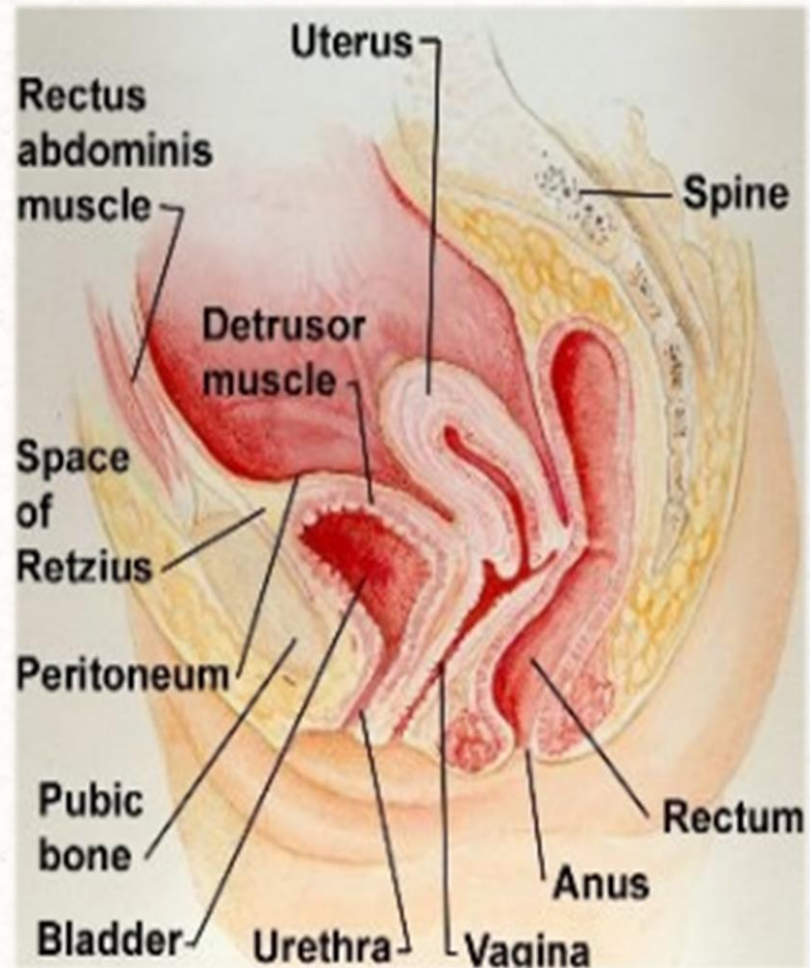


- Refers to bleeding from tears in the mucosa at the junction of the stomach and esophagus
- Usually caused by severe retching, coughing, or vomiting



Space of Retzius

- The potential space between the pubic bone and the bladder
- During surgery, these structures separate from each other like the pages in a book thus laying open the space of Retzius
- aka Retzius' Space, Cave of Retzius, Retzius Cavity



Anatomy/Descriptive

Tibial Plafond

- The distal end of the tibia that is part of the ankle joint
- Also called the tibial pilon



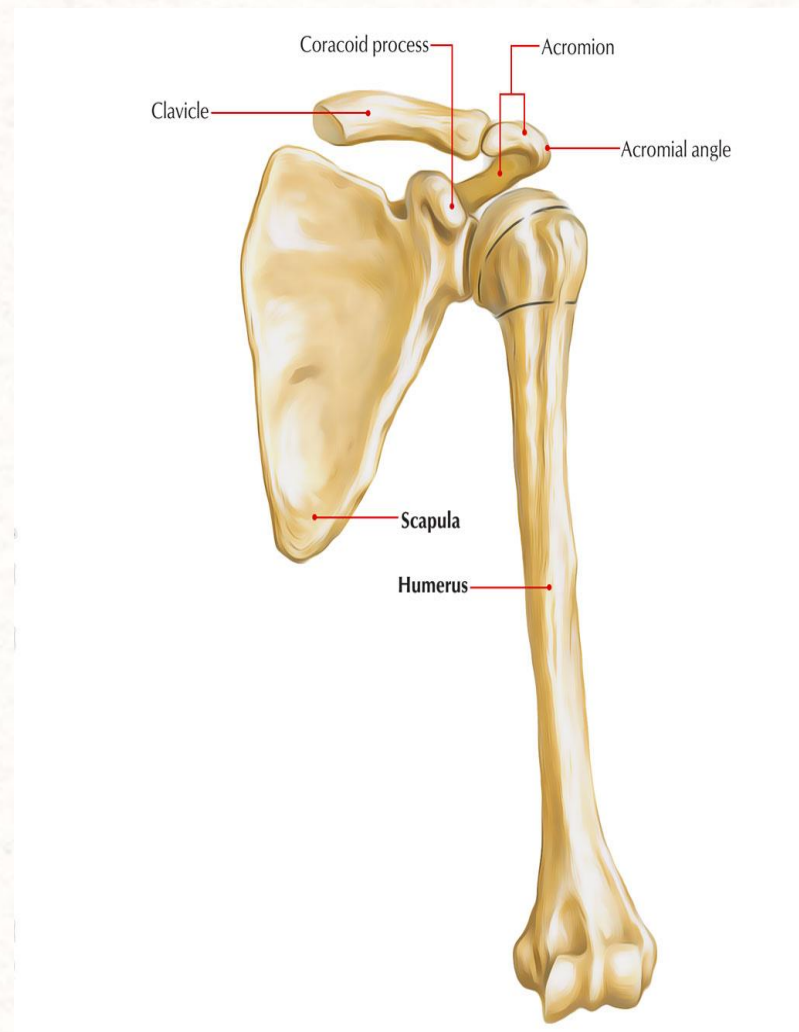
Philtrum

- The vertical indentation in the area between the nose and upper lip
- Also called the medial cleft, lip crease, or Cupid's bow



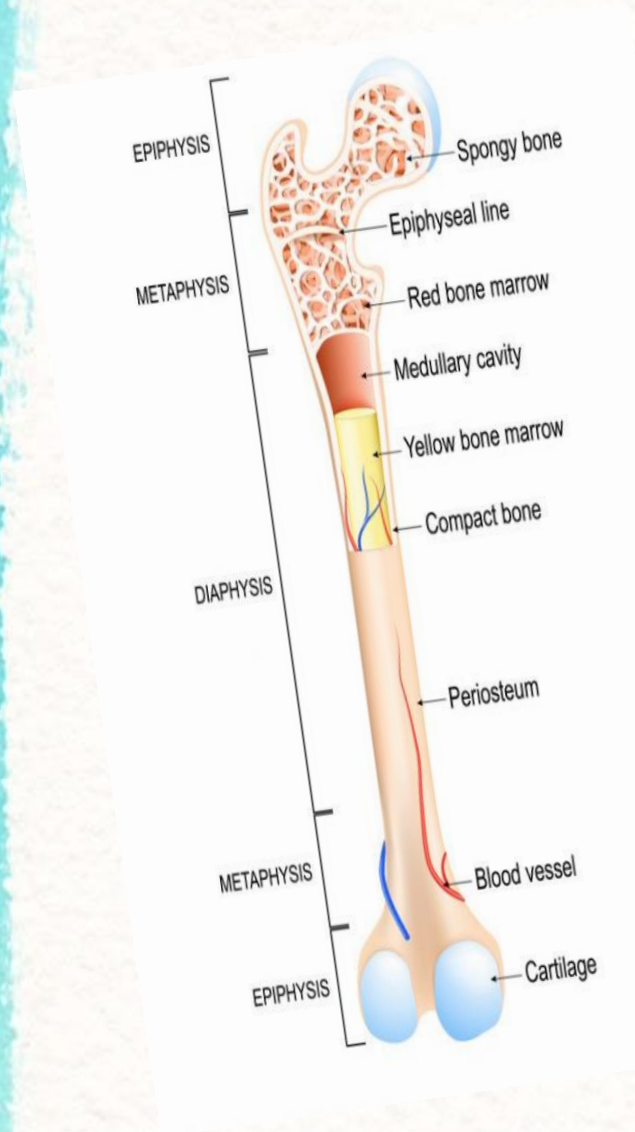
Coracoid Process

- A small hook-like structure on the lateral edge of the superior anterior portion of the scapula



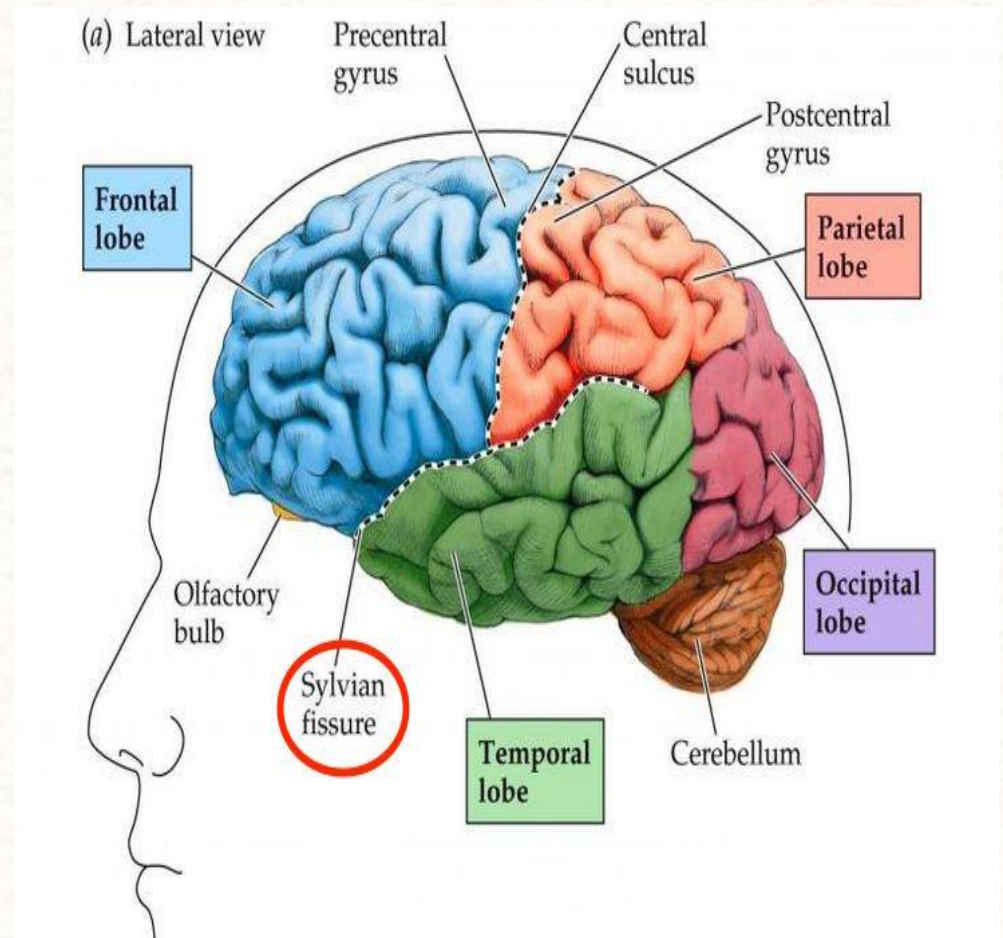
Microtrabecular Fracture

- A bruise in the spongy part of a bone
- Differentiated from a fracture in that only some of the trabeculae are broken



Sylvian Fissure

- A groove on the lateral surface of the brain that separates the frontal and parietal lobes superiorly from the temporal lobe inferiorly

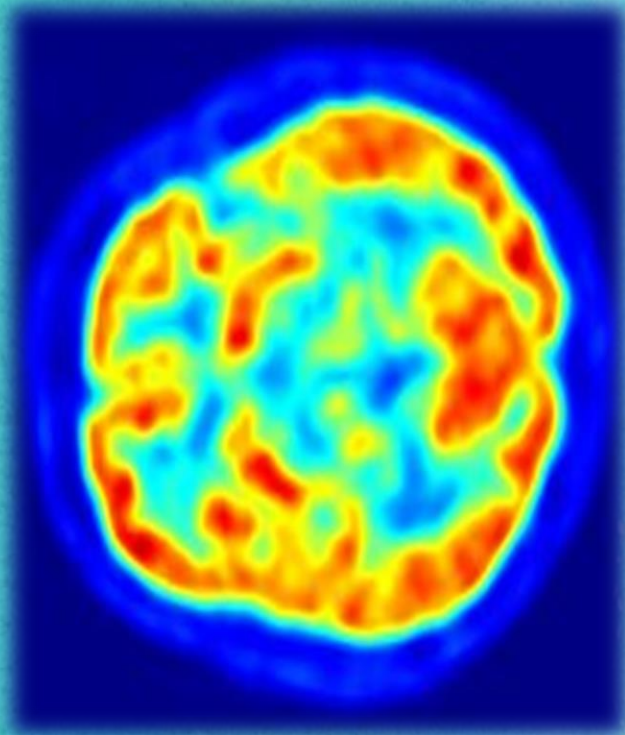




Procedures



Scinitgram



- Diagnostic test in nuclear medicine
- Radioisotopes are attached to drugs that travel to a specific organ or tissue
- Results in a 2-dimensional image

Capsulotomy



A type of eye surgery in which an incision is made into the capsule of the crystalline lens of the eye

Hemicorpectomy

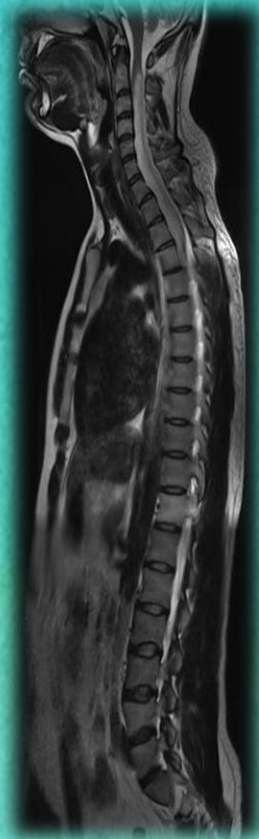


A radical surgery in which the body below the waist is amputated, transecting the lumbar spine.

Conditions / Diagnoses

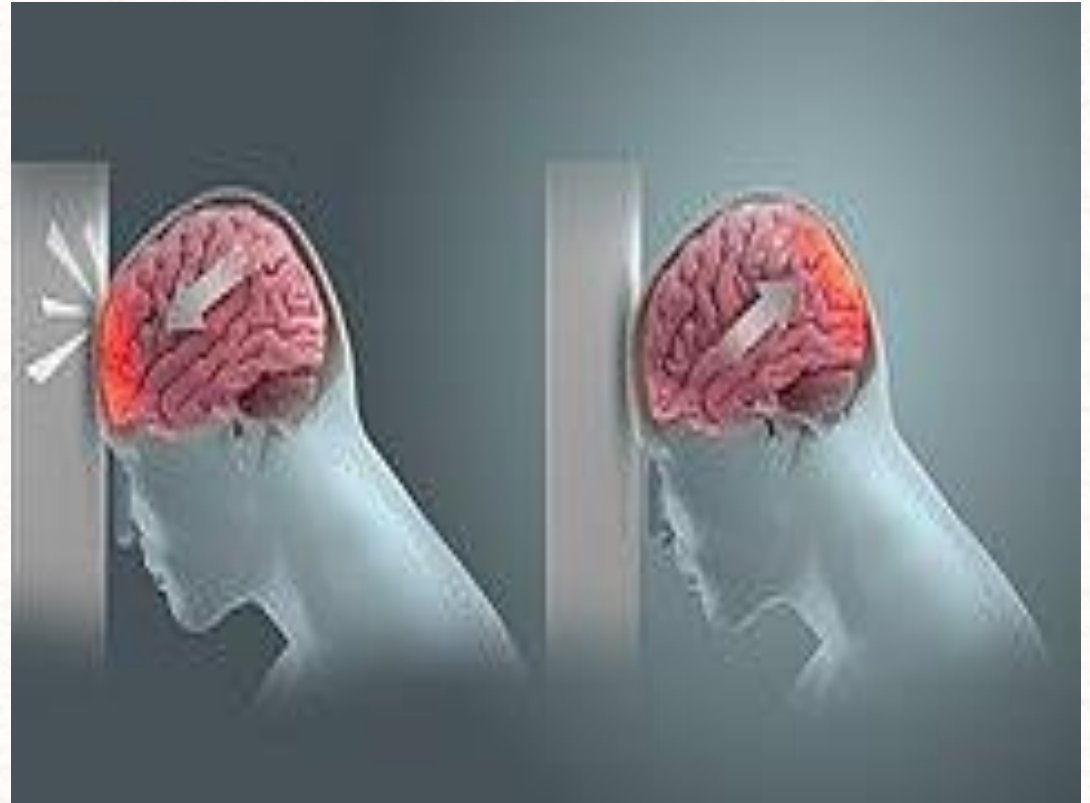
Pneumorrhachis

- A condition in which air has entered the spinal canal
- Traumatic pneumorrhachis is a very rare phenomenon
- Subtypes are epidural or subarachnoid
- Typically resolves spontaneously, but can have serious complications



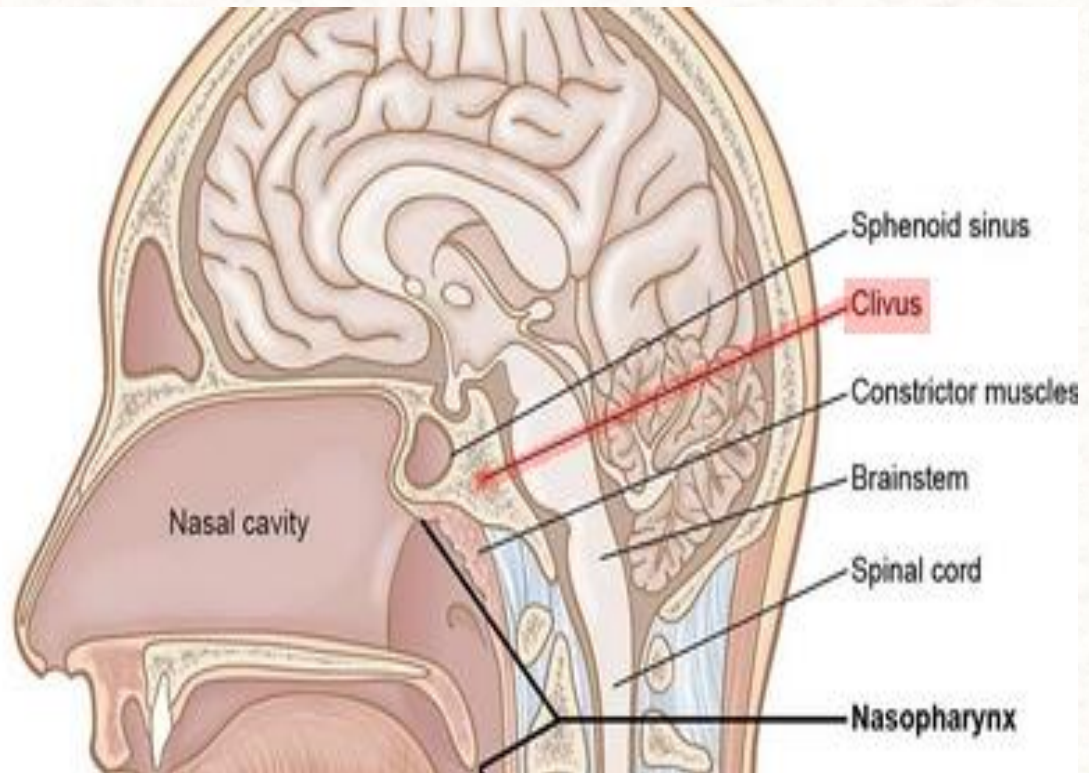
Parafalcine Contracoup Contusion

Parafalcine –
Originating
from the falx
Contracoup –
on the opposite
side of impact



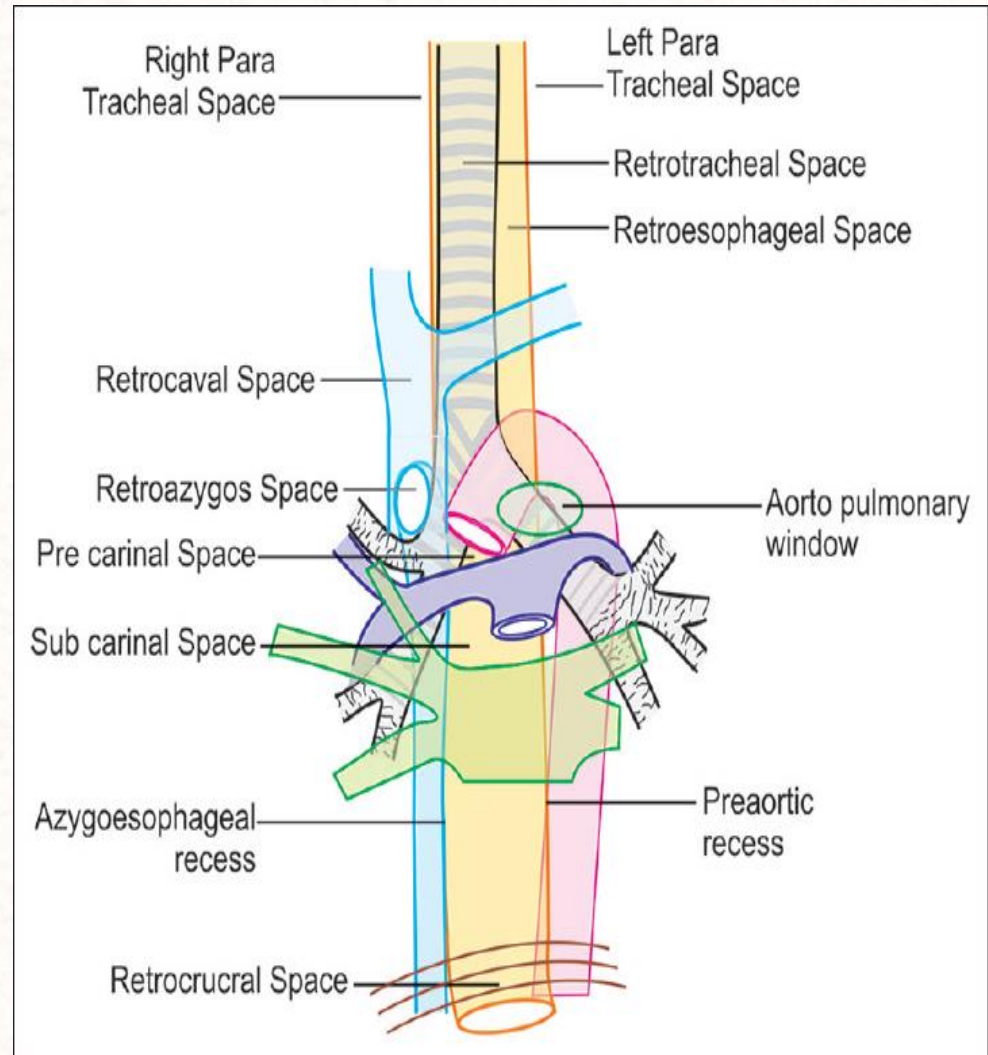
Retroclival

Clivus - a bony part of the cranium at the center of the skull base that forms a gradual sloping process at the anterior-most portion of the basilar occipital bone at its junction with the sphenoid bone



Retrocrural Space

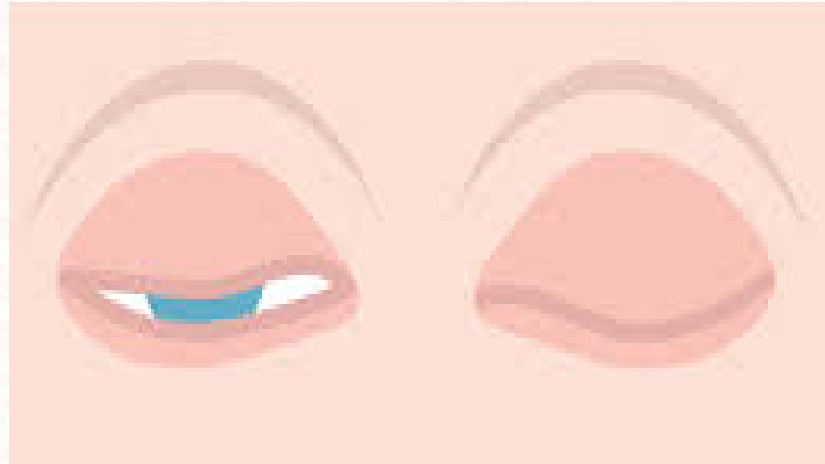
Located posterior to the right and left crura of the diaphragm and is a direct continuation of the mediastinum, which allows the passage of a number of structures (arteries, veins, nerves, etc.)



Lagophthalmos

Pathological
incomplete
closure of the
eyelids
resulting in
exposure of the
eye

*“Lagos” is a Greek
word for hare; an
animal which always
sleeps with its eyes
open*



Saponification

- Conversion of an oil or fat into soap by combination with alkali.
- Vegetable oils and animal fats are the main materials that are saponified.

From op note: "We noted that there may be some saponification of fat overlying the pancreas..."



Telangiectasia

- Small, widened blood vessels most easily seen on the skin, mucous membranes, and the whites of the eyes
- May also occur in the brain or intestines and cause major problems from bleeding



Polycythemia Vera

- A slow growing blood cancer in which bone marrow makes too many red blood cells
- The excess cells thicken the blood and slow its flow
- Complications include blood clots



Pronunciation

parietal
umbilicus
malleolus
sulci
parenchyma
mediastinum
tibia/fibula
oncology
pastoral care



C.S. MOTT CHILDREN'S HOSPITAL
MICHIGAN MEDICINE